

ZHEJIANG TOLERANCE
ELECTRIC CO.,LTD.



TOLERANCE
ZHEJIANG YUEQING LIUSHI
Zhejiang Yueqing Liushi

PLASTIC ANCHOR

- ◆ CABLE CLIP
- ◆ NYLON CABLE TIE
- ◆ CABLE GLAND
- ◆ CABLE MARKER
- ◆ CABLE CLAMP
- ◆ CABLE PROTECTION
- ◆ STAINLESS STEEL CABLE TIE



浙江特伦斯电气有限公司
E-mail : info@Chinatls.com
Http : //www.chinatls.com Chinatls.en.alibaba.com



ZHEJIANG TOLERANCE
ELECTRIC CO.,LTD.

WHY CHOOSE US

- (1) core value: win-win, respect, integrity, reciprocity and mutual benefits.
- (2) we have rich experience in the field of wiring accessories industry and gather around higher popularity in oversea marketing.
- (3) our products have a complete range of specifications and steady good quality, to meet the need of different customers.
- (4) we adhere to the principle of win-win, built a professional electrical wiring accessories platform, we can provide anything whatever you want.



PRODUCT ADVANTAGE

1. Quality is our Culture.
2. We insist on using NEW material—refused to add recycle material. —refused to add brightener
3. we have our own factory, so any shape products can be full customized with low cost.
4. Quality
We always put the product quality in the first place and strict quality control by third party.
The equipment we adopted is the most advanced, so our production facilities and manufactures are of the highest industry standard.



INDUSTRY SOLUTION

1. Since established, we have been focusing on the research and development of our products
2. We adopt the most advanced equipment. so our production facilities and the level of manufacture are the highest industry standard.
3. When you receive the goods, test them. If you have any questions, contact us, we will offer the solution for you.



SERVICE & SUPPORT

1. Our service exceeds all customer expectations and we have a professional team to provide customers with accurate, comprehensive and efficient service
2. Trustworthy quality is success partner, and we try to avoid after-sales issues.
3. 24 hours service online: Welcome to consult us, we will try our best to help you.

OUR PROMISE

Quality is our Culture
Delivery time guaranteed
Superior service to satisfy customer request
Insist win-win development

COMPANY

特伦斯 Profile

Zhejiang Tolerance Electrical Co. Ltd. is a professional manufacturer of wiring accessories factory. After building our own factory, Tolerance focuses on the R & D, production and sale various kinds of wiring accessories all the time. The main products includes cable clips, expand plugs, self adhesive tie mount, saddle type tie mount, cable glands, spiral wrapping bands, stainless steel ties and so on. Our products are mainly applied in housing decoration wiring, wiring of building engineering, sets of electrical wiring, wiring of the shipbuilding industry, communication engineering wiring, light industry and heavy industry, meanwhile, the quality of our products enjoy great popularity at home and abroad.

Our company specializes in improving the quality of the products and meet with the requirement of different countries in order to satisfy with the different customer. Recent years, we establish a good cooperation relation with our main customers, such as, New Delhi of India, Dhaka of Bangladesh, Johannesburg of South Africa, Moscow of Russia, Incheon of South Korea, United Arab Emirates ect. In these countries, our products has occupied a certain market share in the local. At the same time, our products are recognized by these customers, no matter what its quality or appearance of internal and external packaging.

Tolerance will continue to improve the quality and service of products and commit to innovate technology in order to meet with the different requirement from global market. In the future, our company is dedicating in carrying forward the spirit of "Tolerance, for wisdom and different".

www.chinatls.com



03-10 CABLE CLIPS SYSTEM



CABLE CLIPS SYSTEM

- 03 K-type Circle Cable Clips
- 04 Circle cable clips
- 05 Hook Cable Clips
- 06 British Cable Clips
- 07 Flat cable clips
- 08 Pipe Clip
- 09 Hard/Soft Plastic Box Cable Clip
- 10 Paper Box Cable Clip
- 10 Other Brand Packaging

NYLON CABLE TIES SYSTEM



11-22

NYLON CABLE TIES SYSTEM

- 13-14 Self-Lock Type
- 15-16 Barb-Lock Type
- 17 Push Mount Type
- 18 Mountable Head Ties
- 18 Marker Ties
- 19 Releasable Type
- 19 Lashing Cable Tie
- 20 Double Head Cable Tie
- 20 Double Locking Cable Ties
- 20 Handcuff tie Cable Ties
- 21 Magic Cable ties
- 22 Instructions For Use

PLASTIC ANCHOR SYSTEM

- 25 Shark Head type Expand Plugs
- 26 Expand Plugs
- 27 Expand Plugs
- 28 Nylon Hammer Drive Anchor
- 29 Nylon Frame Fixing
- 30 Self-drill Plasterboard Plug
- 30 Zn Alloy Speed Anchors
- 31 Poly-Toggles
- 31 Hdpe Plastic Plugs
- 32 Paper Box
- 32 Green Paper Box
- 32 Blue Skylight Box
- 32 Purple Paper Box

23-32



CABLE GLANDS SYSTEM

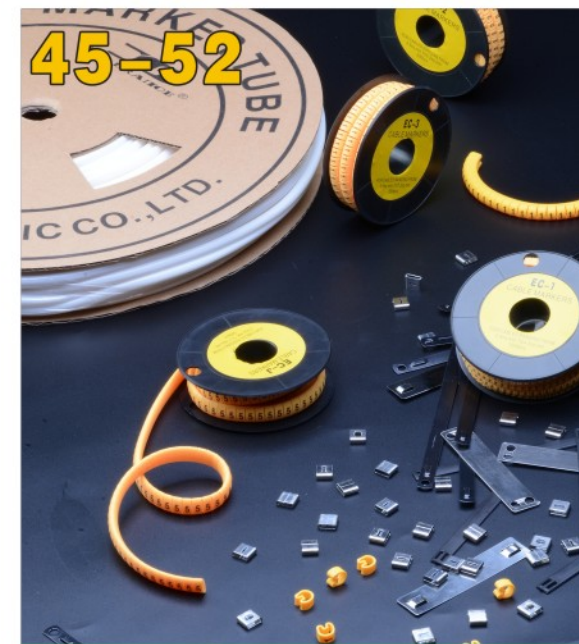


33-44

CABLE GLANDS SYSTEM

- Nylon Cable Glands (Standard type) 34
- Nylon Cable Glands (Metric) M type 35
- Nylon Cable Glands MG/G/NPT 36
- Nylon Screw Plugs PG/M Type 37
- Spiral Cable Glands (PG/M type) 38
- Metal Cable Glands(Brass/S S 304/316) 39
- Metal Cable Glands(Brass/S S 304/316) 40
- Waterproof Junction Box (With Stopper) 41
- Waterproof Junction Box (Without Stopper) 42
- PE/PP/PA Corrugated Pipe 43
- Corrugated Conduit Connector 44
- Right Angle Connector of Corrugated Conduit 44
- Corrugated Pipe Fixed Stem 44

CABLE MARKERS SYSTEM



45-52

CABLE MARKERS SYSTEM

- 46 O type Marker Tube
- 47 Cable Markers
- 48 Color Cable Markers
- 49 MS type Color Coded Cable Markers
- 50 Marker Strip
- 50 Value pack Cable Markers
- 51 Stainless Steel Easy Read Markers
- 51 Stainless Steel Markers Carrier
- 52 Stainless Steel Tige24

CABLE CLAMPS SYSTEM



53-62

CABLE CLAMPS SYSTEM

- 54 Self Adhesive Tie Mount
- 54 Saddle Type Tie Mount
- 55 Adjustable Cable Clamp
- 55 Adjustable Cable Clamp
- 56 Cable Tie Holders
- 56 R type Cable Clamp
- 57 Rubber Tube Clamps
- 58 Vinyl Coated Tube Clamps
- 59 Twist Ties
- 59 Standoff Twist Tie
- 59 Locking Wire Saddle
- 60 Strain Relief Bushing
- 61 Grommet (open)
- 61 Hole Plug
- 62 Snap Bushing
- 62 Snap Bushing(Open)

CABLE PROTECTION SYSTEM



63-76

CABLE PROTECTION SYSTEM

- 64 Cable Tidy(Attached Clip)
- 65 Spiral Wrapping Bands
- 66 Movable Bushing
- 67 PVC Insulating Tape
- 68 Cable Puller
- 69 Trunking and Pipe
- 70 Round Type Wiring Duct
- 71-72 PXC Wiring Duct(slotted)
- 73-74 PZC Wiring Duct(solid)
- 75 Magic tube
- 75-76 Button tube

STAINLESS STEEL CABLE TIES SYSTEM



77-90

STAINLESS STEEL CABLE TIES SYSTEM

- 79-80 Ball-Lock Uncoated Ties
- 81-82 Ball-Lock Polyester Coated Ties
- 83-84 L Type Polyester Coated Ties
- 85 Ball-Lock PVC Coated Ties
- 86 Releasable Uncoated Ties
- 87 Ladder Single-Lock Un coated Ties
- 88 Un coated Bands-MPS Ties
- 88 PVC Coated Bands-MPSJ Series
- 89 Buckles
- 90 Hand Tools

PLASTIC ANCHOR SYSTEM

Pro-Fix
Wiring Accessories

浙江特伦斯电气有限公司



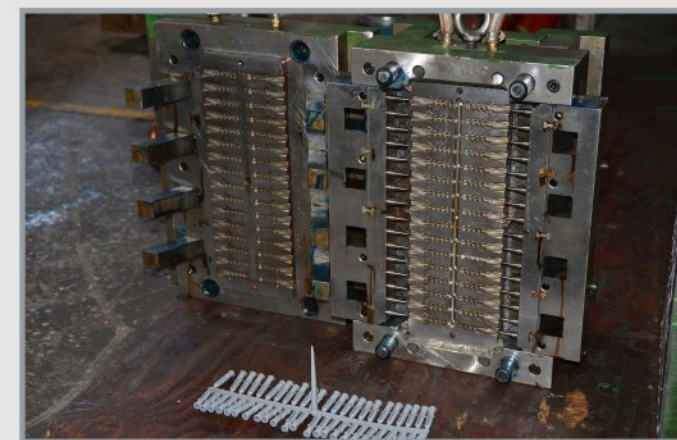
TECHNOLOGICAL PROCESS

Pro-Fix
Wiring Accessories

浙江特伦斯电气有限公司



SOPHISTICATED MANUFACTURING



ZHEJIANG TOLERANCE ELECTRIC CO., LTD

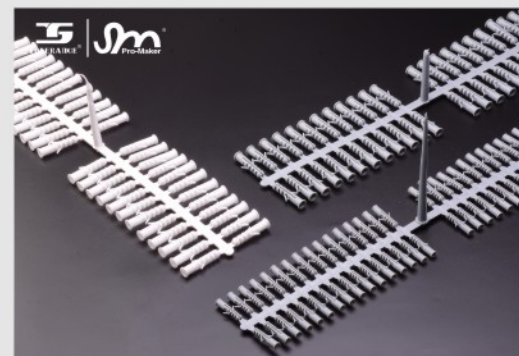
PLASTIC ANCHOR SYSTEM

PLASTIC ANCHOR SYSTEM
Shark Head type Expand Plugs

◎鲨鱼头膨胀管

Pro-Fix
Wiring Accessories

浙江特伦斯电气有限公司



注意事项：可配合常见的纤维板螺钉，自攻螺钉，木螺钉等使用若用在空心砖，多孔砖以及加气混凝土中，钻孔时应选用旋转钻孔方式，既不能使用带冲击功能的钻孔模式。

1、因螺纹结构的不同，采用木螺钉装配鱼式尼龙膨胀管所能达到的锚固能力比使用相同螺纹规格的自攻螺钉或纤维板螺钉，高出20%-30%。

2、为了保证安装效果的可靠，请确保配用螺钉的长度能穿透膨胀管并伸出至少相当于1个螺钉直径的长度。

3、使用与墙壁转角等类似场合时，应确保：

(1)鱼式尼龙膨胀管的安装位置与转角的距离至少在1个膨胀管的长度(L)以上。

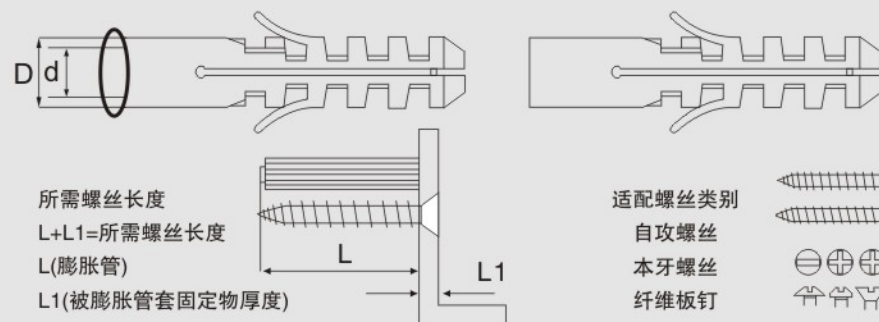
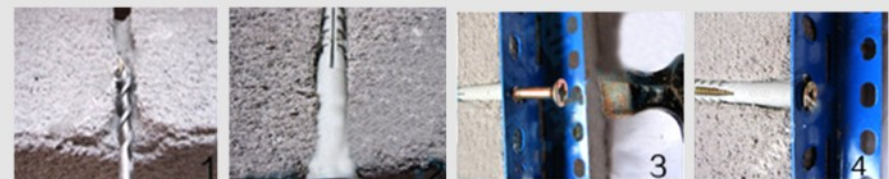
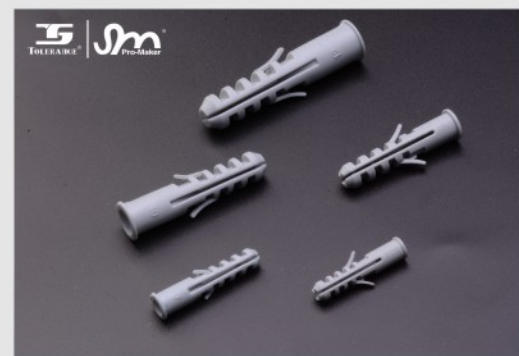
(2)鱼头状防跟转结构的展开方向(即膨胀方向)应与墙角边缘平行

4、本产品不适合用于持续受一轴向拉力载荷的场所(例如垂直悬挂安装件)。

Material: made of PE
• Geometry of the expansion pipe, in the solid structure of the objection the expansion
• To prevent rotation of the structural design, when using the screw does not rotate in the air to follow

Color: Mostly grey and white, other colors are also available

●实际使用案例:
Actual use case:



编号 Item NO.	长(L)(mm)	外径(D)(mm)	内径(d)(mm)	Screw dia. (mm)
SPEN-0525	25	5.0	4.0	φ 2.6-4.0
SPEN-0630	30	6.0	4.8	φ 3.5-5.0
SPEN-0735	35	7.0	5.3	φ 4.0-5.5
SPEN-0840	40	8.0	5.8	φ 4.5-6.0
SPEN-1050	50	10.0	8.0	φ 6.0-8.0
SPEN-1260	60	12.0	11.0	φ 8.0-10.0
SPEN-1475	75	14.0	12.0	φ 10.0-12.0
SPEN-1680	80	16.0	14.0	φ 12.0-14.0

PLASTIC ANCHOR SYSTEM
Expand Plugs

◎膨胀管

Pro-Fix
Wiring Accessories

浙江特伦斯电气有限公司

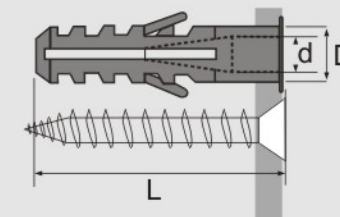


产品描述

- ◇ 优质PE原料，精工制作而成。
- ◇ 独特的膨胀曲线设计，锚固力更强。
- ◇ 翅型叶片防止锚栓在墙体内部跟转。
- ◇ 加大的边缘防止锚栓穿入墙体。
- ◇ 配合优质螺钉，使得膨胀管膨胀效果更好。

使用方法

- 01、先在墙体上钻孔，打孔的深度及直径需要与工程产品尺寸对应。
- 02、将锚栓用胶锤敲入墙体
- 03、把锚固物锚固孔对准锚栓
- 04、插入螺钉，顺时针拧动与锚固物平齐即可。

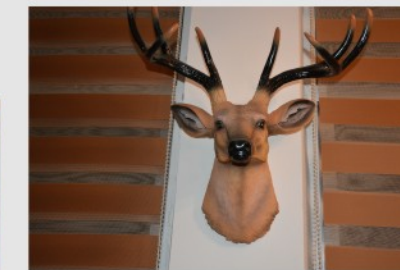
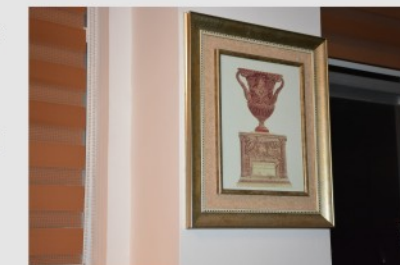


Unit: mm

Part No.	L (mm)	D (mm)	d (mm)	Screw (mm)	Package (pcs/bag)
TPEN-05	25.3	5.0	3.5	φ 3.0 × 25	100pcs/bag
TPEN-06	29.1	6.0	4.8	φ 4.0 × 30	
TPEN-07	35.0	7.0	5.3	φ 4.0 × 35	
TPEN-08	37.9	8.0	5.8	φ 4.0 × 40	
TPEN-10	47.8	10.0	8.3	φ 4.0 × 50	
TPEN-12	57.5	12.0	10.0	φ 6.0 × 60	

• Geometry of the expansion pipe, in the solid structure of the objection the expansion
• To prevent rotation of the structural design, when using the screw does not rotate in the air to follow
Material: PE,
Color: Mostly grey and white, other colors are also available

●实际使用案例:
Actual use case:



PLASTIC ANCHOR SYSTEM
Expand Plugs

膨胀管

Pro-Fix
Wiring Accessories

浙江特伦斯电气有限公司



MPEN

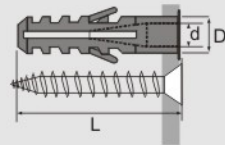
产品描述

- ◇ 优质PE原料，精工制作而成。
- ◇ 独特的膨胀曲线设计，锚固力更强。
- ◇ 翅型叶片防止锚栓在墙体内部跟转。
- ◇ 加大的边缘防止锚栓穿入墙体。
- ◇ 配合优质螺钉，使得膨胀管膨胀效果更好。

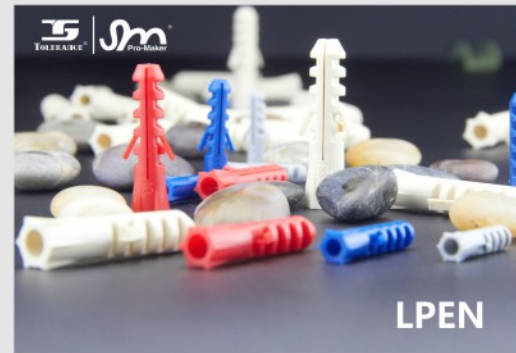
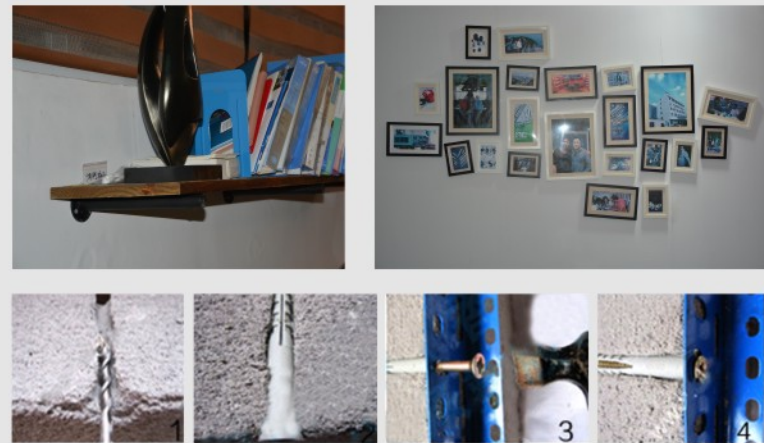
使用方法

- 01、先在墙体上钻孔，打孔的深度及直径需要与工程产品尺寸对应。
- 02、将锚栓用胶锤敲入墙体
- 03、把锚固物锚固孔对准锚栓
- 04、插入螺钉，顺时针拧动与锚固物平齐即可。

• Geometry of the expansion pipe, in the solid structure of the object in the expansion
• To prevent rotation of the structural design, when using the screw does not rotate in the air to follow
Material: PE,
Color: Mostly grey and white, other colors are also available



● 实际使用案例:
Actual use case:



LPEN



Unit: mm

Part No.	L (mm)	D (mm)	d (mm)	Screw (mm)	Package (pcs/bag)
MPEN-06	29.1	6.0	4.8	φ 4.0 × 30	100pcs/bag
MPEN-07	35.0	7.0	5.3	φ 4.0 × 35	
MPEN-08	35.7	8.0	5.8	φ 4.0 × 35	
MPEN-10	36.8	10.0	8.3	φ 4.0 × 35	
MPEN-12	37.9	12.0	10.0	φ 4.0 × 40	
LPEN-07	30.0	7	4.8	φ 4.5 × 30	
LPEN-08	38.6	8	4.8	φ 4.5 × 40	
LPEN-10	47.2	10	6.7	φ 5.0 × 50	
LPEN-12	53.5	12	7.7	φ 6.0 × 60	

PLASTIC ANCHOR SYSTEM
Nylon Hammer Drive Anchor

敲击式锚栓

Pro-Fix
Wiring Accessories

浙江特伦斯电气有限公司



材质：尼龙66+雨伞牙螺钉

产品描述：

- ◇ 敲击式锚栓，配合雨伞牙螺钉。
- ◇ 敲击螺钉时胀管膨胀区胀开，并挤压墙壁达到锚固的作用。
- ◇ 敲击式安装，施工更简单，节约施工时间。
- ◇ 伞形螺钉的独特设计，在需要时轻松旋出。
- ◇ 独特的膨胀曲线，产生巨大的锚固效果。
- ◇ 在潮湿的环境下，有不锈钢螺钉可选。

the aricle consists of a nylon plug with countersunk head and a predrive nail-screw, yellow zinc plated. It's suitable for fixing on concrete, brick and other high-density material.

适用基材：

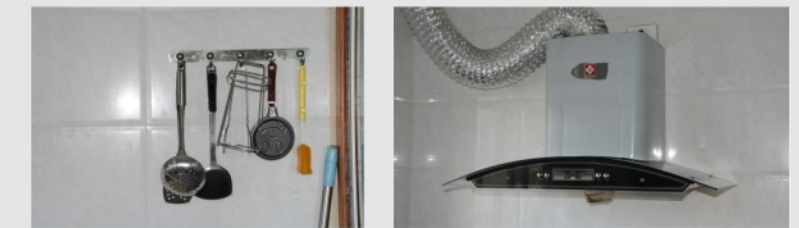
混凝土
实心砖
石材

用于固定：

门窗 方木
橱柜 地板龙骨
衣帽架



● 实际使用案例:
Actual use case:



Unit: mm

ITEM NO	ANCHOR SIZE	NAIL SIZE	DRILL DIA. (mm)	PRACTICAL MAX (mm)
HF0530	5 × 30	3.5 × 35	5	5
HF0535	5 × 35	3.5 × 40	5	10
HF0540	5 × 40	3.5 × 45	5	15
HF0545	5 × 45	3.5 × 50	5	20
HF0550	5 × 50	3.5 × 55	5	25
HF0635	6 × 35	4.0 × 40	6	6
HF0640	6 × 40	4.0 × 45	6	10
HF0650	6 × 50	4.0 × 55	6	15
HF0660	6 × 60	4.0 × 65	6	30
HF0670	6 × 70	4.0 × 75	6	40
HF0680	6 × 80	4.0 × 85	6	50
HF0850	8 × 50	5.0 × 50	8	15
HF0860	8 × 60	5.0 × 65	8	20
HF0880	8 × 80	5.0 × 85	8	40
HF08100	8 × 100	5.0 × 105	8	60
HF08115	8 × 115	5.0 × 120	8	60
HF08135	8 × 135	5.0 × 140	8	90
HF1080	10 × 80	7.0 × 85	10	40
HF10100	10 × 100	7.0 × 105	10	50
HF10120	10 × 120	7.0 × 125	10	80
HF10140	10 × 140	7.0 × 145	10	90
HF10160	10 × 160	7.0 × 165	10	110

PLASTIC ANCHOR SYSTEM
Nylon Frame Fixing

® 拧入式锚栓

Pro-Fix
Wiring Accessories

浙江特伦斯电气有限公司



产品描述:

- ◇ 本产品采用优质PP注塑而成。
- ◇ 独特设计的拧入式锚栓，设计合理使用简单。
- ◇ 在潮湿环境下使用时，可选用不锈钢钢钉。
- ◇ 完美的膨胀曲线设计，大大的增加了锚栓的锚固力。
- ◇ 套管上的叶翅，在安装时防止膨胀管旋转，并增加摩擦力。
- ◇ 配合拧入式钢钉，完美的达到膨胀效果。

适用基材:

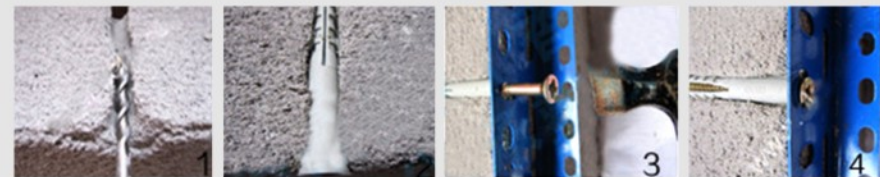
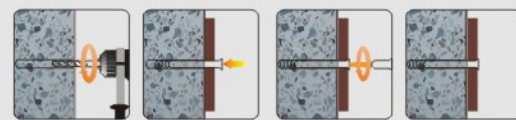
混凝土
实心砖
石材

用于固定:

门窗 方木
橱柜 地板龙骨
衣帽架

Desc: the article consists of a nylon plug with countersunk head and a predrive screw. yellow zinc plated with a Screw head. Suitable for fixings on concrete, bricks and other high-density material.

● 实际使用案例:
Actual use case:



ITEM NO	ANCHOR SIZE	NAIL SIZE	DRILL DIA. (mm)	PRACTICAL MAX (mm)
FI0530	5 × 30	3.5 × 35	5	5
FF0640	6 × 40	4.0 × 45	6	10
FF0660	6 × 60	4.0 × 65	6	30
FF0680	6 × 80	4.0 × 85	6	50
FF0860	8 × 60	5.0 × 65	8	20
FF0880	8 × 80	5.0 × 85	8	40
FF08100	8 × 100	5.0 × 105	8	60
FF08120	8 × 120	5.0 × 125	8	80
FF1080	10 × 80	7.0 × 85	10	40
FF10100	10 × 100	7.0 × 105	10	50
FF10120	10 × 120	7.0 × 125	10	80
FF10140	10 × 140	7.0 × 145	10	90
FF10160	10 × 160	7.0 × 165	10	100

PLASTIC ANCHOR SYSTEM
Self-drill Plasterboard Plug

® 尼龙快速壁虎

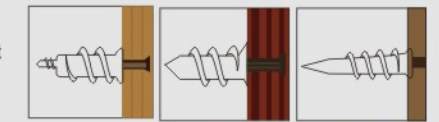
Pro-Fix
Wiring Accessories

浙江特伦斯电气有限公司



在空环境中T型膨胀。持有的防旋转设计不易转动及拉出。环保材料，韧性好，耐冲击、不破裂、膨胀系数高，安装准确快捷、提高工效和安装质量、耐腐蚀、耐老化，在-40℃-80℃之间能保持良好性能。

Material: Nylon 66+20% fibre



Unit: mm

ITEM NO	ANCHOR SIZE	DRILL DIA. (mm)	PLUG LENGTH	SCREW DIA. (mm)
Sd1340	13 × 40	13	40MM	4.0-5.5
SD1432	14 × 32	14	32MM	4.0-5.5
SD1342	13 × 42	13	42MM	4.0-5.5
SD1428	14 × 28	14	28MM	4.0-5.5
SD1423	14 × 23	14	23MM	4.0-5.5

PLASTIC ANCHOR SYSTEM
Znalloy Speed Anchors

® 锌合金快速壁虎

材质: 锌合金
产品描述:

在空环境中T型膨胀。持有的防旋转设计不易转动及拉出。环保材料，韧性好，耐冲击、不破裂、膨胀系数高，安装准确快捷、提高工效和安装质量、耐腐蚀、耐老化，在-40℃-80℃之间能保持良好性能。

Material: Zn alloy

Application:

Fixing suspended ceiling brackets, brick ties, drywall track, insulation brackets, signage, and many more material to concrete, solid brickwork and stone.



Unit: mm

ITEM NO	ANCHOR SIZE
SA1332	13 × 32
SA1342	13 × 42
SA1428	14 × 28
SA1432	14 × 32
SA1438	14 × 38
SA1442	14 × 42

PLASTIC ANCHOR SYSTEM
Poly-Toggles

◎中空墙体锚栓

Pro-Fix
Wiring Accessories

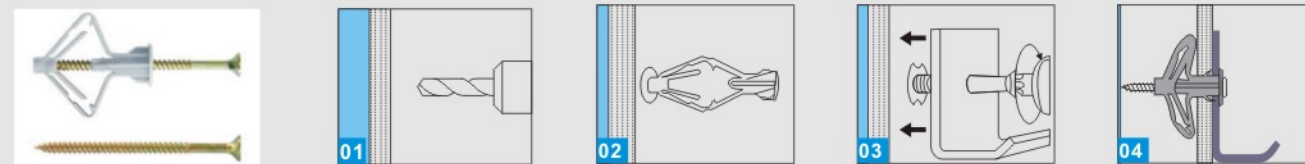
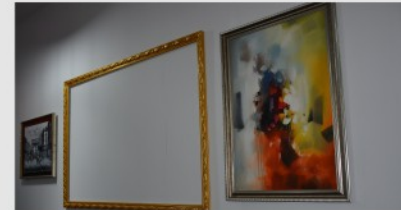
浙江特伦斯电气有限公司



优质原料PA/PE，精工制作而成。
蝴蝶形设计，更容易打结。
颈部的菱形设计，防止锚栓跟转。
适用于石膏板等中空墙体的锚固。
可在任何空腔内收缩打结，通过打结达到锚固的效果。

使用基材： 用于固定：
石膏板 画框 毛巾架
铝塑板 窗框 电线槽
空心天花板 管卡 小型支架
刨花板

Material: Nylon 66. Polyethylene
Suitable for base material. Plasterboard.



Unit: mm

ITEM NO	ANCHOR SIZE	DRILL DIA. (mm)	PLUG LENGTH
NPT4-12	10 x 33	10	33
NPT15-19	10 x 40	10	40
NPT24-28	10 x 47	10	47

Wiring Fixed Series
Hdpe Plastic Plugs

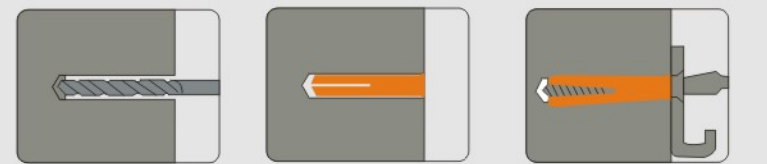
◎连体膨胀管



产品描述
优质PE原料，精工制作而成

使用方法
01、先在墙体上钻孔，打孔的深度及直径需要与工程产品尺寸对应。
02、将锚栓用胶锤敲入墙体
03、把锚固物锚固孔对准锚栓
04、插入螺钉，顺时针拧动与锚固物平齐即可。

Typical application:
1. For fixing of light weight loads e.g. switches, sockets, condits trunking, skirtings and frames, junction boxes, etc.
SUITABLE FOR USE IN: Concrete. Stone/ Rock. Solid Bricks&Blocks. Low Density Materials, Hollow bricks. Building Blocks, Board Materials.



Unit: mm

ITEM NO	ANCHOR SIZE	DRILL DIA. (mm)	SCREW DIA. (mm)	PLUG LENGTH	COLOR
HPP-5.0	5.0	5, 5.5	4, 6, 8	24.7	Yellow
HPP-5.5	5.5	5.5, 6.0	6, 8, 10	30.0	Red
HPP-7.0	7.0	7	8, 10, 12, 14	36.3	Brown
HPP-10.0	10.0	10	10, 12, 14, 16	47.6	Blue
HPP-11.0	11.0	11	14, 16, 18, 20	54.6	Green

PLASTIC ANCHOR SYSTEM
Paper Box

Pro-Fix
Wiring Accessories

浙江特伦斯电气有限公司



ITEM NO	PCS/BOX	BOX/CTN	MEAS
FPB-5mm	100	200	46 x 41 x 30
FPB-6mm	100	200	46 x 41 x 30
FPB-7mm	100	200	51 x 41 x 30
FPB-8mm	100	100	41 x 31 x 35
FPB-10mm	50	100	41 x 31 x 35
FPB-12mm	25	100	41 x 31 x 35

Green Paper Box



ITEM NO	PCS/BOX	BOX/CTN	MEAS
GPB-5mm	100	200	46 x 41 x 30
GPB-6mm	100	200	46 x 41 x 30
GPB-7mm	100	200	51 x 41 x 30
GPB-8mm	100	100	41 x 31 x 35
GPB-10mm	50	100	41 x 31 x 35
GPB-12mm	25	100	41 x 31 x 35

Blue Skylight Box



ITEM NO	PCS/BOX	BOX/CTN	SCREW	MEAS
WPB-5mm	50+50	80	φ 3 x 25	34 x 23 x 29
WPB-6mm	50+50	80	φ 4 x 30	34 x 23 x 29
WPB-7mm	50+50	80	φ 4 x 35	34 x 32 x 34
WPB-8mm	50+50	80	φ 4 x 40	41 x 31 x 39
WPB-10mm	50+50	80	φ 4 x 45	41 x 31 x 39
WPB-12mm	25+25	80	φ 6 x 50	41 x 31 x 39

Purple Paper Box



ITEM NO	PCS/BOX	BOX/CTN	MEAS
PPB-7mm	100	200	51 x 41 x 30
PPB-8mm	100	200	41 x 31 x 35
PPB-10mm	50	100	41 x 31 x 35
PPB-12mm	25	100	41 x 31 x 35